



IPU10

The IPU10 vertical lifting clamp is used for lifting, turning, moving or vertical transfer of sheet, plates, or fabrications from horizontal to vertical and down to horizontal (180°) as needed. The hinged hoisting eye allows for the clamp to place and lift the load from any direction, or with a multiple leg sling without side-loading the clamp.

Universal - for lifting in any direction

- Available in capacities of .5 thru 30 metric tons (Higher Working Load Limits are available upon request).
- Wide variety of jaw openings available: 0" to 6.1".
- Welded alloy steel body for strength and smaller size. Forged alloy components, where required.
- Individually Proof Tested to 2 times the Working Load Limit with certification.
- Company name (CrosbyIP), logo, Working Load Limit and jaw opening permanently stamped on body.
- Each product is individually serialized, with the serial number and Proof Load test date stamped on body. User manual with test certificate is included with each clamp.
- Available in a variety of styles:
 - IP10 - Standard clamp for materials with a surface hardness to 363HV10 (345 HB).
 - IP10J - Larger jaw opening.
 - IP10S - For use with Stainless Steel material.
 - IP10H - For use with materials with a surface hardness to 472HV10 (450 HB).
- Full 180° turning range for material transfer, turning or moving.
- Lock open, lock closed ability with latch for pretension on material and then release of material.
- Optional IP-5000 Stinger assembly available (see page 428). Allows for easy connection between the clamp and hoist hook.
- Minimum WLL of 10% of maximum WLL.
- For use with materials with a surface hardness to 279HV10. Only 5% minimum WLL is needed.
- Maintenance and repair kits are available.
- Manufactured by an ISO 9001 facility.
- All sizes are **RFID EQUIPPED**.



IPU10S

IPU10S: For use with Stainless Steel material.
IPU10H: For use with materials with a surface hardness to 47Rc (450 HB).

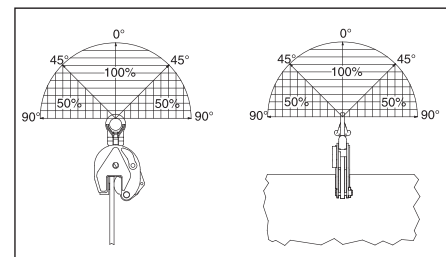
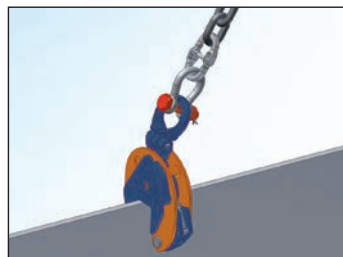
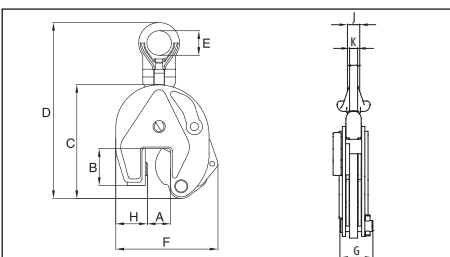


Load Rated

Model IPU10 / IPU10J / IPU10S / IPU10H

| Model | Working Load Limit (t)* | IPU10 Stock No. | Weight Each (lbs.) | Dimensions (in.) | | | | | | | | | |
|--|-------------------------|-----------------|--------------------|------------------|-------|-------|-------|------|-------|------|------|------|------|
| | | | | Jaw A | B | C | D | E | F | G | H | J | K |
| IPU10 | 0.25 | 2703850 | 4.19 | 0 - 0.63 | 1.73 | 5.12 | 8.50 | 1.57 | 4.53 | 1.65 | 1.10 | - | 0.43 |
| IPU10 | 0.5 | 2701675 | 4.19 | 0 - 0.63 | 1.73 | 5.12 | 8.50 | 1.57 | 4.53 | 1.65 | 1.10 | - | 0.43 |
| IPU10 | 1 | 2701663 | 5.29 | 0 - 0.75 | 1.77 | 5.47 | 8.86 | 1.57 | 5.00 | 1.65 | 1.50 | - | 0.43 |
| IPU10 | 2 | 2701677 | 18.3 | 0 - 1.38 | 3.07 | 7.91 | 14.49 | 2.76 | 7.40 | 2.52 | 2.17 | - | 0.63 |
| IPU10 | 3 | 2701665 | 32.6 | 0 - 1.56 | 3.94 | 9.96 | 17.17 | 2.95 | 8.74 | 3.07 | 2.36 | - | 0.79 |
| IPU10 | 4.5 | 2701667 | 35.3 | 0 - 1.56 | 3.94 | 9.96 | 17.17 | 2.95 | 8.94 | 3.23 | 2.56 | - | 0.79 |
| IPU10 | 6 | 2701669 | 52.9 | 0 - 2.00 | 4.96 | 11.89 | 20.67 | 3.15 | 11.50 | 3.31 | 3.74 | 1.73 | 0.79 |
| IPU10 | 9 | 2701671 | 65.0 | 0 - 2.00 | 4.96 | 12.80 | 21.73 | 3.15 | 12.20 | 3.70 | 4.09 | 1.73 | 0.79 |
| IPU10 | 12 | 2701679 | 126 | 0 - 2.13 | 6.30 | 15.43 | 24.25 | 3.15 | 17.05 | 4.76 | 5.39 | 1.61 | 0.98 |
| IPU10 | 16 | 2701683 | 174 | 0.2 - 2.50 | 7.09 | 18.23 | 28.98 | 3.46 | 19.37 | 4.76 | 6.02 | 1.77 | 0.98 |
| IPU10 | 22.5 | 2701687 | 278 | 0.2 - 3.13 | 8.74 | 21.81 | 33.98 | 4.33 | 22.24 | 5.47 | 7.32 | 1.93 | 0.98 |
| IPU10 | 30 | 2701691 | 311 | 0.2 - 3.13 | 8.74 | 21.81 | 34.17 | 4.33 | 22.83 | 6.02 | 7.32 | 2.13 | 1.18 |
| IPU10J | 3 | 2702465 | 38.1 | 1.57 - 3.15 | 4.53 | 10.63 | 17.01 | 2.95 | 10.91 | 3.07 | 2.64 | - | 0.79 |
| IPU10J | 6 | 2702469 | 58.4 | 2.00 - 4.00 | 4.96 | 11.89 | 20.28 | 3.15 | 13.23 | 3.31 | 3.74 | 1.73 | 0.79 |
| IPU10J | 9 | 2701673 | 67.2 | 2.00 - 4.00 | 4.96 | 12.80 | 21.65 | 3.15 | 14.17 | 3.70 | 4.13 | 1.73 | 0.79 |
| IPU10J | 12 | 2701681 | 143 | 2.13 - 4.25 | 7.01 | 17.24 | 26.06 | 3.15 | 19.33 | 4.76 | 5.35 | 1.61 | 0.98 |
| IPU10J | 16 | 2701685 | 187 | 2.50 - 5.00 | 8.19 | 20.51 | 30.87 | 3.46 | 22.13 | 4.76 | 6.30 | 1.77 | 0.98 |
| IPU10J | 22.5 | 2701689 | 328 | 3.13 - 6.13 | 10.04 | 24.72 | 36.93 | 4.33 | 25.98 | 5.47 | 7.72 | 1.93 | 0.98 |
| IPU10J | 30 | 2701693 | 364 | 3.13 - 6.13 | 10.04 | 24.72 | 37.09 | 4.33 | 25.98 | 6.02 | 7.72 | 2.13 | 1.18 |
| For stainless steel - with universal hoisting eye | | | | | | | | | | | | | |
| IPU10S | 0.5 | 2702275 | 4.19 | 0 - 0.63 | 1.73 | 5.12 | 8.50 | 1.57 | 4.53 | 1.65 | 1.10 | - | 0.43 |
| IPU10S | 1 | 2702263 | 5.29 | 0 - 0.75 | 1.77 | 5.47 | 8.86 | 1.57 | 5.00 | 1.61 | 1.50 | - | 0.43 |
| IPU10S | 2 | 2702277 | 18.7 | 0 - 1.38 | 3.07 | 7.91 | 14.49 | 2.76 | 7.40 | 2.52 | 2.17 | - | 0.63 |
| IPU10S | 3 | 2702265 | 32.6 | 0 - 1.56 | 3.94 | 9.96 | 17.17 | 2.95 | 8.74 | 3.07 | 2.36 | - | 0.79 |
| IPU10S | 4.5 | 2702267 | 35.3 | 0 - 1.56 | 3.94 | 9.96 | 17.17 | 2.95 | 8.94 | 3.23 | 2.56 | - | 0.79 |
| IPU10S | 6 | 2702269 | 52.9 | 0 - 2.00 | 4.96 | 11.89 | 20.67 | 3.15 | 11.50 | 3.31 | 3.74 | 1.73 | 0.79 |
| IPU10S | 9 | 2702271 | 65.0 | 0 - 2.00 | 4.96 | 12.80 | 21.73 | 3.15 | 12.20 | 3.70 | 4.09 | 1.73 | 0.79 |
| IPU10S | 12 | 2702279 | 126 | 0 - 2.13 | 6.30 | 15.43 | 24.25 | 3.15 | 17.05 | 4.76 | 5.39 | 1.61 | 0.98 |
| For very hard materials - with universal hoisting eye | | | | | | | | | | | | | |
| IPU10H | 0.5 | 2702175 | 4.19 | 0 - 0.63 | 1.73 | 5.12 | 8.50 | 1.57 | 4.53 | 1.65 | 1.10 | - | 0.43 |
| IPU10H | 0.75 | 2702163 | 5.29 | 0 - 0.79 | 1.77 | 5.47 | 8.86 | 1.57 | 5.00 | 1.61 | 1.50 | - | 0.43 |
| IPU10H | 1 | 2702177 | 18.3 | 0 - 1.38 | 3.07 | 7.91 | 14.49 | 2.76 | 7.40 | 2.52 | 2.17 | - | 0.63 |
| IPU10H | 2 | 2702165 | 32.6 | 0 - 1.56 | 3.94 | 9.96 | 17.17 | 2.95 | 8.74 | 3.07 | 2.36 | - | 0.79 |
| IPU10H | 3 | 2702167 | 35.3 | 0 - 1.56 | 3.94 | 9.96 | 17.17 | 2.95 | 8.94 | 3.23 | 2.56 | - | 0.79 |
| IPU10H | 4.5 | 2702169 | 52.9 | 0 - 2.00 | 4.96 | 11.89 | 20.67 | 3.15 | 11.50 | 3.31 | 3.74 | 1.73 | 0.79 |
| IPU10H | 6 | 2702171 | 65.0 | 0 - 2.00 | 4.96 | 12.80 | 21.73 | 2.76 | 12.20 | 3.70 | 4.09 | 1.73 | 0.79 |

* Design Factor based on EN 13155 and ASME B30.20. Model IPU10R (remote control opening and closing via a cable) on request. Model IPU10W (wedge) available on request.



Vertical Clamps

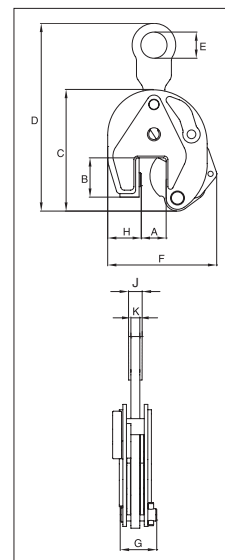


IP10

The IP10 vertical lifting clamp is used for the lifting, turning, moving or vertical transfer of sheet, plates, or fabrications from horizontal to vertical and down to horizontal (180°) as needed. Usually used as a single point pick or when used with a spreader beam with multiple vertical drop lines.

For vertical lifting, turning and transfer

- Available in capacities of .5 thru 30 metric tons (Higher Working Load Limits are available upon request).
- Wide variety of jaw openings available: 0 to 6.1".
- Welded alloy steel body for strength and smaller size. Forged alloy components, where required.
- Individually Proof Tested to 2 times the Working Load Limit with certification.
- Company name (Crosby/IP), logo, Working Load Limit and jaw opening permanently stamped on body.
- Each product is individually serialized, with the serial number and Proof Load test date stamped on body. User manual and test certificate included with each clamp.
- Available in a variety of styles:
 - IP10 - Standard clamp for materials with a surface hardness to 363HV10 (345 HB).
 - IP10J - Larger jaw opening.
 - IP10S - For use with Stainless Steel material.
 - IP10H - For use with materials with a surface hardness to 472HV10 (450 HB).
- Full 180° turning range for material transfer, turning or moving.
- Lock open, lock closed ability with latch for pretension on material and then release of material.
- Optional IP-5000 Stinger assembly available (see page 428). Allows for easy connection between the clamp and hoist hook.
- For plate surface hardness till 279HV10, only 5% min. WLL is needed.
- Maintenance and repair kits are available.
- Manufactured by an ISO 9001 facility.
- All sizes are **RFID EQUIPPED**.



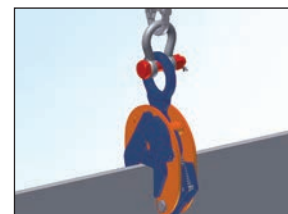
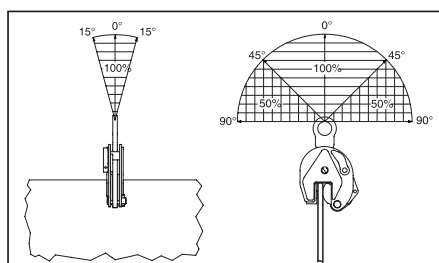
Model IP10 / IP10J / IP10S / IP10H

| Model | Working Load Limit (t)* | IP10 Stock No. | Weight Each (lbs.) | Dimensions (in.) | | | | | | | | | |
|---|-------------------------|----------------|--------------------|------------------|-------|-------|-------|------|-------|-------|------|------|------|
| | | | | Jaw A | B | C | D | E | F | G | H | J | K |
| IP10 | 0.25 | 2703958 | 3.97 | 0 - 0.63 | 1.73 | 5.12 | 7.99 | 1.57 | 4.53 | 1.65 | 1.10 | - | 0.43 |
| IP10 | 0.5 | 2701674 | 3.97 | 0 - 0.63 | 1.73 | 5.12 | 7.99 | 1.57 | 4.53 | 1.65 | 1.10 | - | 0.43 |
| IP10 | 1 | 2701662 | 4.85 | 0 - 0.75 | 1.77 | 5.47 | 8.35 | 1.57 | 5.00 | 1.65 | 1.50 | - | 0.43 |
| IP10 | 2 | 2701676 | 16.8 | 0 - 1.38 | 3.07 | 7.91 | 12.99 | 2.76 | 7.40 | 2.52 | 2.17 | - | 0.63 |
| IP10 | 3 | 2701664 | 30.4 | 0 - 1.56 | 3.94 | 9.96 | 17.09 | 2.95 | 8.74 | 3.07 | 2.36 | - | 0.79 |
| IP10 | 4.5 | 2701666 | 33.1 | 0 - 1.56 | 3.94 | 9.96 | 17.09 | 2.95 | 8.94 | 3.23 | 2.56 | - | 0.79 |
| IP10 | 6 | 2701668 | 51.8 | 0 - 2.00 | 4.96 | 11.89 | 20.35 | 3.15 | 11.50 | 3.31 | 3.74 | 1.57 | 0.79 |
| IP10 | 9 | 2701670 | 60.6 | 0 - 2.00 | 4.96 | 12.80 | 17.52 | 3.15 | 12.20 | 3.70 | 4.09 | 1.73 | 0.98 |
| IP10 | 12 | 2701678 | 108 | 0 - 2.13 | 6.30 | 15.43 | 22.60 | 3.15 | 17.05 | 4.76 | 5.39 | 1.61 | 0.98 |
| IP10 | 16 | 2701682 | 150 | 0.25 - 2.50 | 7.09 | 18.23 | 27.01 | 3.46 | 19.37 | 4.76 | 6.02 | 1.93 | 0.98 |
| IP10 | 22.5 | 2701686 | 243 | 0.25 - 3.13 | 8.74 | 21.81 | 31.81 | 4.33 | 22.24 | 5.47 | 7.32 | 1.93 | 0.98 |
| IP10 | 30 | 2701690 | 273 | 0.25 - 3.13 | 8.74 | 21.81 | 31.61 | 4.33 | 22.24 | 6.02 | 7.32 | 2.13 | 1.18 |
| IP10J | 0.5 | 2701646 | 3.97 | 0.59 - 1.18 | 1.77 | 5.04 | 8.23 | 1.57 | 5.04 | 1.61 | 1.26 | - | 0.43 |
| IP10J | 6 | 2701705 | 54.0 | 2.00 - 4.00 | 4.96 | 11.89 | 19.92 | 3.15 | 13.23 | 3.31 | 3.74 | 1.57 | 0.79 |
| IP10J | 9 | 2701672 | 62.8 | 2.00 - 4.00 | 4.96 | 12.80 | 21.34 | 3.15 | 14.17 | 3.70 | 4.13 | 1.73 | 0.98 |
| IP10J | 12 | 2701680 | 128 | 2.13 - 4.25 | 7.01 | 17.24 | 24.41 | 3.15 | 19.33 | 4.76 | 5.35 | 1.61 | 0.98 |
| IP10J | 16 | 2701684 | 176 | 2.50 - 5.00 | 8.19 | 20.51 | 28.90 | 3.46 | 22.13 | 4.76 | 6.30 | 1.77 | 0.98 |
| IP10J | 22.5 | 2701688 | 289 | 3.13 - 6.13 | 10.04 | 24.72 | 34.76 | 4.33 | 25.98 | 5.47 | 7.72 | 1.93 | 0.98 |
| IP10J | 30 | 2701692 | 324 | 3.13 - 6.13 | 10.04 | 24.72 | 34.92 | 4.33 | 25.98 | 6.02 | 7.72 | 2.13 | 1.18 |
| For stainless steel - with fixed hoisting eye | | | | | | | | | | | | | |
| IP10S | 0.5 | 2702274 | 3.97 | 0 - 0.63 | 1.73 | 5.12 | 7.99 | 1.57 | 4.53 | 1.65 | 1.10 | - | 0.43 |
| IP10S | 1 | 2702262 | 16.8 | 0 - 1.38 | 1.77 | 5.47 | 8.35 | 1.57 | 5.00 | 1.65 | 1.50 | - | 0.43 |
| IP10S | 2 | 2702276 | 30.4 | 0 - 1.56 | 3.07 | 7.91 | 12.99 | 2.76 | 7.40 | 2.52 | 2.17 | - | 0.63 |
| IP10S | 3 | 2702264 | 33.1 | 0 - 1.56 | 3.94 | 9.96 | 17.09 | 2.95 | 8.74 | 3.07 | 2.36 | - | 0.79 |
| IP10S | 4.5 | 2702266 | 51.8 | 0 - 2.00 | 3.94 | 9.96 | 17.09 | 2.95 | 8.94 | 3.23 | 2.56 | - | 0.79 |
| IP10S | 6 | 2702268 | 60.6 | 0 - 2.00 | 4.96 | 11.89 | 20.35 | 3.15 | 11.50 | 3.31 | 3.74 | 1.57 | 0.79 |
| IP10S | 9 | 2702270 | 60.6 | 0 - 2.00 | 4.96 | 12.80 | 21.42 | 3.15 | 12.20 | 3.70 | 4.09 | 1.73 | 0.98 |
| IP10S | 12 | 2702278 | 108 | 0 - 2.13 | 6.30 | 15.43 | 22.60 | 3.15 | 17.05 | 4.76 | 5.39 | 1.61 | 0.98 |
| For very hard materials - with fixed hoisting eye | | | | | | | | | | | | | |
| IP10H | 0.5 | 2702174 | 3.97 | 0 - 0.63 | 1.73 | 5.12 | 8.15 | 1.57 | 4.53 | 1.65 | 1.10 | - | 0.43 |
| IP10H | 0.75 | 2702162 | 4.85 | 0 - 0.81 | 1.77 | 5.47 | 8.62 | 1.57 | 5.12 | 1.10 | 1.50 | - | 0.43 |
| IP10H | 1.0 | 2702176 | 16.8 | 0 - 1.38 | 3.07 | 7.91 | 12.99 | 2.76 | 7.40 | 2.52 | 2.17 | - | 0.63 |
| IP10H | 2.0 | 2702164 | 30.4 | 0 - 1.56 | 3.94 | 9.96 | 17.09 | 2.95 | 8.74 | 3.07 | 2.36 | - | 0.79 |
| IP10H | 3.0 | 2702166 | 33.1 | 0 - 1.56 | 3.94 | 9.96 | 17.09 | 2.95 | 8.94 | 3.23 | 2.56 | - | 0.79 |
| IP10H | 4.5 | 2702168 | 51.8 | 0 - 2.00 | 4.96 | 11.89 | 20.35 | 3.15 | 11.50 | 3.31 | 3.74 | 1.57 | 0.79 |
| IP10H | 6.0 | 2702170 | 60.6 | 0 - 2.00 | 4.96 | 12.80 | 21.42 | 3.15 | 12.20 | 3.62 | 4.13 | 1.73 | 0.98 |
| IP10H | 25.0 | 2703530 | 163 | 0 - 2.36 | 6.65 | 1.57 | - | 1.85 | 7.24 | 12.60 | 8.66 | 0.98 | 3.43 |

* Design Factor based on EN 13155 and ASME B30.20.

Model IP10 available in 40t, 55t and 100t on request.

Model IP10R (remote control opening and closing via a cable) available on request.





IPNM10N

The IPNM10N vertical lifting clamp is used for lifting, turning, moving or vertical transfer of sheet, plates, or fabrications from horizontal to vertical and down to horizontal (180°) as needed without marring the surface of the material. Materials such as aluminum, stainless steel, painted materials, aircraft skins, composite material, glass, plastic, etc., can be lifted without marring.

Will not mar, or scratch the material surface.

For use in almost all sectors of industry where, during the lift or transfer, no damage to the material is permitted.

- Available in capacities of .5 , 1 and 2 metric tons.
- Wide variety of jaw openings available: 0" to 1.57"
- Welded alloy steel body for strength and smaller size. Forged alloy components, where required.
- Individually Proof Tested to 2 times the Working Load Limit with certification.
- Company name (CrosbyIP), logo, Working Load Limit and jaw opening permanently stamped on body.
- Each product is individually serialized, with the serial number and Proof Load test date stamped on body. User manual with test certificate is included with each clamp.
- Full 180° turning range for material transfer, turning or moving.
- Lock open, lock closed ability with latch for pretension on material and then release of material.
- Optional IP-5000 Stinger assembly available (see page 428). Allows for easy connection between the clamp and hoist hook.
- Material must be clean and dry.
- Maintenance replacement kits are available.
- Manufactured by an ISO 9001 facility.
- All sizes are **RFID EQUIPPED**.



IPNM10P

The IPNM10P vertical lifting clamp is used for lifting, turning, moving or vertical transfer of sheet, plates, or fabrications from horizontal to vertical and down to horizontal (180°) as needed without marring the surface of the material. Materials such as aluminum, stainless steel, painted materials, aircraft skins, composite material, glass, plastic, etc., can be lifted without marring. The protective cover reduces the risk of damage to surrounding plates.

Will not mar, or scratch the material surface.

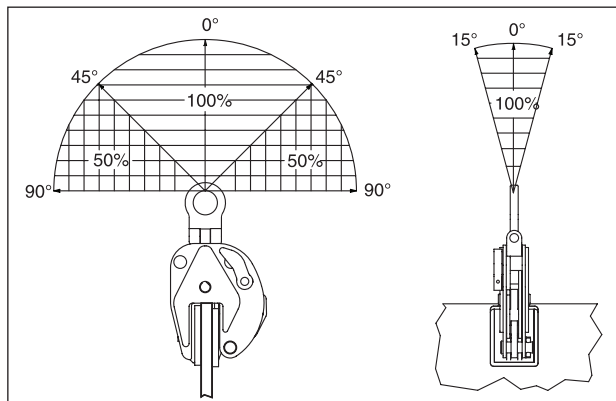
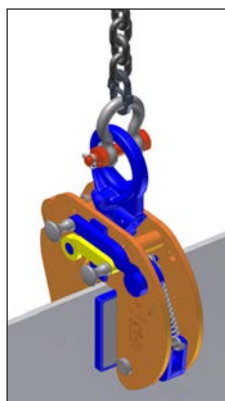
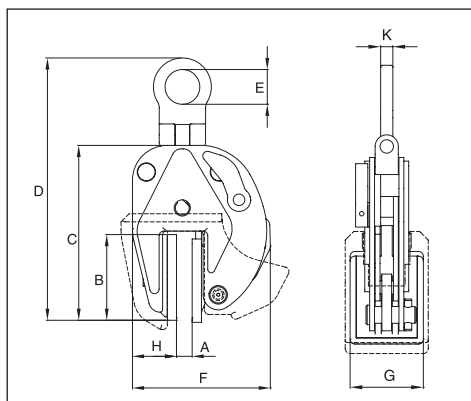


Load Rated

Model IPNM10

| Model | Working Load Limit (t)* | IPNM10 Stock No. | Weight Each (lbs.) | Dimensions (in.) | | | | | | | | |
|-------------------------|-------------------------|------------------|--------------------|------------------|------|-------|-------|------|-------|------|------|------|
| | | | | Jaw A | B | C | D | E | F | G | H | K |
| IPNM10N | 0.5 | 2703811 | 5.95 | 0 - 0.38 | 3.31 | 6.26 | 9.25 | 1.57 | 5.04 | 2.36 | 1.61 | 0.43 |
| IPNM10N | 1 | 2703738 | 9.70 | 0 - 0.81 | 3.82 | 8.23 | 10.94 | 1.57 | 7.24 | 3.15 | 2.20 | 0.43 |
| IPNM10 | 2 | 2703442 | 32.0 | 0 - 1.56 | 6.02 | 10.16 | 15.59 | 2.76 | 11.65 | 3.94 | 6.34 | 0.63 |
| With protection cap | | | | | | | | | | | | |
| IPNM10P | 0.5 | 2703278 | 6.17 | 0 - 0.38 | 3.23 | 6.18 | 8.70 | 1.57 | 5.71 | 2.68 | 1.89 | 0.43 |
| IPNM10P | 1 | 2703279 | 9.92 | 0 - 0.81 | 3.82 | 7.68 | 10.87 | 1.57 | 8.07 | 3.23 | 2.60 | 0.43 |
| With larger jaw opening | | | | | | | | | | | | |
| IPNM10NJ | 1 | 2703814 | 10.4 | 0.81 - 1.44 | 3.82 | 8.66 | 12.64 | 1.57 | 7.87 | 3.15 | 2.20 | 0.43 |
| IPNM10NJ1 | 1 | 2703819 | 12.1 | 0 - 1.00 | 3.82 | 9.37 | 13.82 | 1.57 | 8.39 | 3.15 | 2.48 | 0.43 |

* Design Factor based on EN 13155 and ASME B30.20.



Vertical Clamps

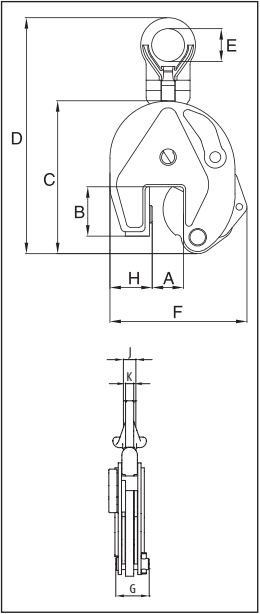


IPU10A

The IPU10A automatically clicks on to the material as soon as the clamp is placed on the plate. The fact that the safety lock remains in position as the clamp closes precludes hazardous situations. Fastening the IPU10A clamp in places that are difficult to reach is no problem.

For vertical transport of plates

- Available in capacities of 1 and 2 metric tons.
- Jaw openings available: 0" to 1.97".
- Welded alloy steel body for strength and smaller size. Forged alloy components where required.
- Individually Proof Tested to 2 times the Working Load Limit with certification.
- Company name (CrosbyIP), logo, Working Load Limit and jaw opening permanently stamped on body.
- Each product is individually serialized, with the serial number and Proof Load test date stamped on body. User manual with test certificate is included with each clamp.
- Available in a variety of styles: Full 180° turning range for material transfer, turning or moving.
- Lock open, lock closed ability with latch for pretension on material and then release of material.
- Optional IP-5000 Stinger assembly available (see page 428). Allows for easy connection between the clamp and hoist hook.
- Minimum WLL of 10% of Maximum WLL.
- Maintenance replacement parts are available.
- Manufactured by an ISO 9001 facility.
- All sizes are **RFID EQUIPPED**.

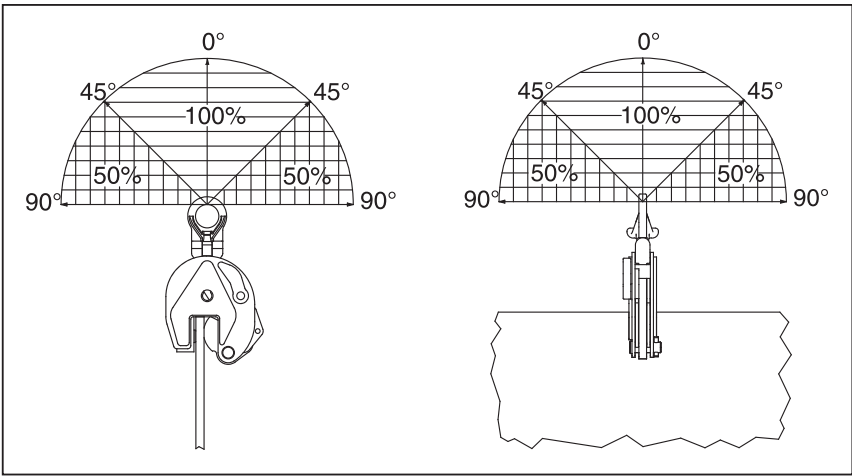


Load Rated

Model IPU10A

| Model | Working Load Limit (t)* | IPU10A Stock No. | Weight Each (lbs.) | Dimensions (in.) | | | | | | | | | |
|--------|-------------------------|------------------|--------------------|------------------|------|-------|-------|------|-------|------|------|------|------|
| | | | | Jaw A | B | C | D | E | F | G | H | J | K |
| IPU10A | 1 | 2701628 | 5.07 | 0 - 0.81 | 1.77 | 5.47 | 8.86 | 1.57 | 5.00 | 1.65 | 1.50 | - | 0.43 |
| IPU10A | 2 | 2701629 | 18.5 | 0 - 1.38 | 3.07 | 7.91 | 14.49 | 2.76 | 7.40 | 2.52 | 2.17 | - | 0.63 |
| IPU10A | 6 | 2701638 | 56.0 | 0 - 2.00 | 4.96 | 11.89 | 20.67 | 3.15 | 11.50 | 3.31 | 3.74 | 1.73 | 0.79 |

* Design Factor based on EN 13155 and ASME B30.20.



Crosby Lifting
Clamps