

ANCHOR POINT AT 150

INSPECTIONS

1. Before each use a visual inspection should be carried out by the user to ensure that the anchor point is in good condition.
2. It is recommended that the AT150 anchor point is periodically inspected every 12 month after installation. The periodic inspection must be carried out by a qualified person. The result of inspection must be recorded in the Operational Sheet.
3. During the inspections any mechanical, chemical or thermal defects (cracs, deformation or corrosion) should be taken into account.
4. When the anchor point was angaged in fall arresting than it should be replaced with new one or submited under detailed inspection carried out by qualified technician. The result of inspection should be recorded in the Operational Sheet.
5. In case of any doubt please contact with producer or its authorised representatives.

OPERATIONAL SHEET

Device name	Reference number	User name
Date of manufacture	Serial number	Date of installation

TECHNICAL INSPECTIONS

Date of insp.	Type of inspection (periodical/special/...)	Result	Next inspection date	Signature of the person responsible

Producer:

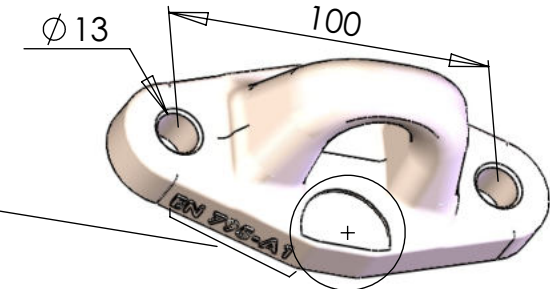
LANEX a.s., Hlučinská 1/96, 747 23 Bolatice, Česká republika, www.lanex.cz,
 TEL.: +420 553 751 111, FAX: +420 553 654 125, E-MAIL: lanex@lanex.cz

Lanex

ANCHOR POINT AT 150

PRODUCT DESCRIPTION

Anchor point AT150 is an anchorage device class A1, conform to the EN795 standard. It is designed for connecting a PPE system against fall from a height to a fixed construction.
 The AT150 anchor point may be utilised by single user.
 The AT150 is made of alluminium alloy.
 The AT150 anchorage point is intended for installation at vertical, horizontal or inclined position. It can be fasten to a fixed structure with the aid of double screw joint or anchorages.



MARKING

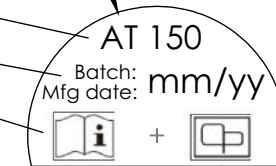
Number of the EN795 standard and the class A1 applicable for the device.

Reference Number

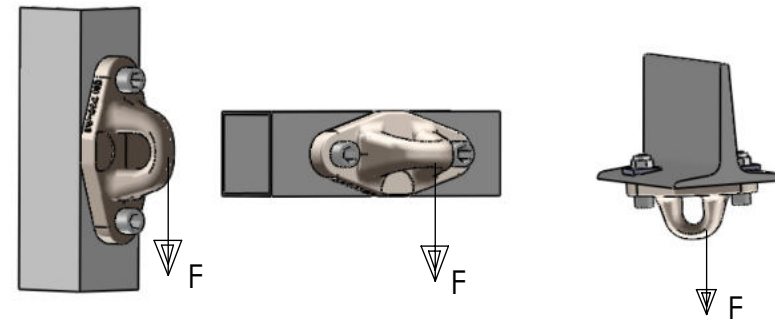
Batch number and mfg date (month / year)

Note: Study the instruction before use

Manufacturer or distributor name or marking



LOADING DIRECTIONS



Lanex

ANCHOR POINT AT 150

ESSENTIAL RULES OF APPLICATION

1. This manual must be read before installation of the anchor point and before using as well. The instruction must be followed.
2. This instruction manual must be kept available to all users. Additional copies can be delivered on request by producer or distributor.
3. AT150 anchor point can be applied for attaching PPE against falls from a height conform to the Directive 89/686/EU. The fall protection system must be in accordance to EN363 or EN358 standard.
4. *Personal protective equipment in association of the AT150 must not be used by people whose health condition may influence their safety during normal use or emergency procedures.*
5. Rules of attaching the fall protection system must be conform to EN363 standard and standards of applied equipment (e.g. EN354/355 - safety lanyards and energy absorbers, EN353-2 - guidet type fall arresters, EN360 - retractable fall arresters, EN358 - work positioning systems).
6. *Before each use, the free space required beneath the user at the workplace should be verified, so that, in the case of a fall, there will be no collision with the ground or the other obstacle in the fall path.*
7. *The anchor point shall be used exclusively in accordance with its purpose. Any special applications must be agreed with producer or authorised representatives.*
8. This AT150 anchor point must be installed exclusively by qualified person who have enough knowledge and experience in this subject. In particular such a person should know the EN795 standard, the bolts or anchors manufacturer's guidelines concerning assemblies and this manual. The assembled anchor point should be checked (approved) by a person authorised to check (e.g. engineer or qualified designer).
9. The person who assembles the anchor point takes full responsibility for the assembly. Neither the manufacturer nor the distributor are responsible for an assembly that is careless and in compliant with the guidelines. On request, the manufacturer and/or distributor deliver all the necessary technical information concerning the product, the technology of its assembly, the way of checking it and the product certificate of compliance.
10. As far as possible, the anchor point should be located above the user, in order to limit the fall distance.
11. The environmental conditions existent in place of installation, having an effect on corrosion of the anchor point and/or attachments, should be taken into account.
12. *If the product is re-sold outside the original country of destination this instruction should be provided in the language of the country in which the product is to be used.*

OPERATION

1. Before and during use any necessary rescue actions should be planned.
2. Before each use a visual inspection should be carried out to ensure that the anchor point is in good condition.
3. The usage of anchor point with any fault (such as: corrosion, cracks or deformation) is prohibited.
4. The usage of anchor point which was engaged to arrest of a fall is prohibited. Such a device should be replaced or inspected by qualified engineer.
5. Anchoring to the AT150 anchor point more than one person or suspend any loads is prohibited.
6. Making any modifications of the anchor point is prohibited.

Lanex

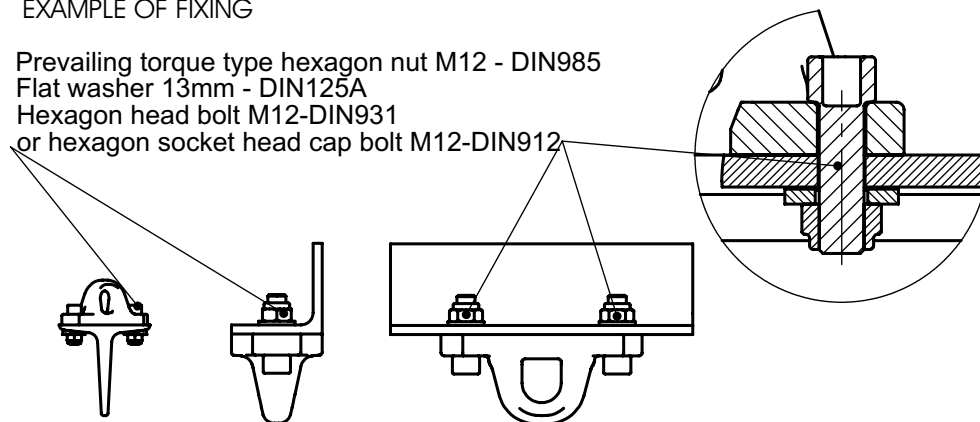
ANCHOR POINT AT 150

INSTALLATION

1. Before installation the AT150 anchor point should be stored in a clean and dry place. The storage conditions should protect it against chemical or mechanical damages.
2. The AT150 anchor point can be fixed to vertical, horizontal or inclined support of resistance more than 10kN.
3. The installation should be carried out according to proper procedures and following the recommendations of the producer of applied fastenings (bolts or anchors).
4. The connection to a steel base should be made with the use of screws of a minimum durability corresponding to the durability of screws M12-A2-70. All the elements of the screw connection should be protected against corrosion or made from stainless steel materials. The nuts and hexagonal heads of the screws should be equipped with pads appropriate for thread M12. The nuts in screw connections should be self-braking or secured against self-unscrewing with locknuts. The bolts lengths should be appropriate to the thickness of the support structure.
5. The connection with the concrete base should be made with the use of chemical or mechanical anchors of the bolt diameter 12mm. The concrete base should have a durability against pressure of at least 20MPa. The anchors have to be mounted strictly according to the instruction of the anchor's manufacturer.
6. The recommended material of the joint is stainless steel class A2 or other material which is appropriate for the aggressiveness of the environment in which the anchor point is applied.
7. Recommendations concerning installation specified in informative appendices A of the EN795 standard should be applied.
8. In case of fixing in other materials than mentioned above (e.g. wood), it is recommended that the skilled technician carries out a calculation to check that the connection meets the EN795 class-A1 requirements.

EXAMPLE OF FIXING

Prevailing torque type hexagon nut M12 - DIN985
Flat washer 13mm - DIN125A
Hexagon head bolt M12-DIN931
or hexagon socket head cap bolt M12-DIN912



Lanex